

All rights reserved by Kelsey Design Associates
 No part of this publication may be reproduced, stored in any retrieval system or transmitted in any form or by any means without the prior permission of Kelsey Design Associates
 It is not valid if drawn to any dimensions to be checked on site and any discrepancies reported to Kelsey Design Associates
 An architect, interior design, interior planning & project management

SVP DRAINAGE TO M&E CONSULTANTS DETAILS
 IT IS IMPERATIVE THAT FOR 182 MET FRAME STRUCTURAL WALLS WITH ONE RESISTANT BAR, THE BAR IS FIXED TO THE SIDE AS INDICATED ON THESE DRAWINGS IN ORDER TO ENSURE INTERNAL PLASTER TO PLASTER DIMENSIONS OF ROOMS ARE MAINTAINED, STUDY BEDROOMS MIN. 2.46M

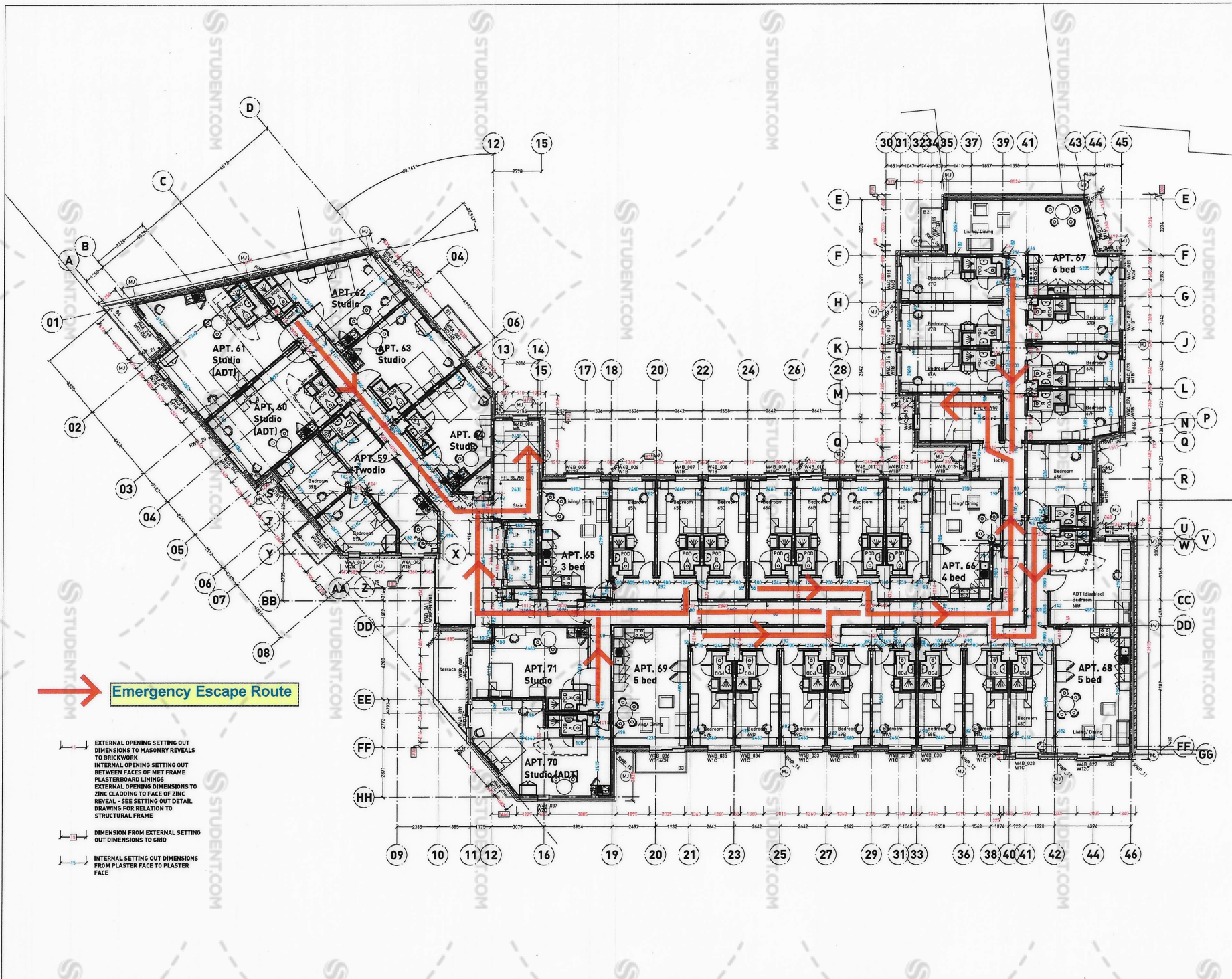
ROOM ARRANGEMENT INDICATIVE ONLY - REFER TO RDA ROOM LAYOUT DRAWINGS FOR ALL ROOM LAYOUT DETAILS
 CURRENT REVISION INDICATED BY CLOUD

Revision - Date
 Rev A - 26/09/13
 Internal structural ceiling Sarking Out dimensions added, key to dimensions added, Wall - Q14-14 increased to structural 195, Wall C20-20 corrected to 182, Q14-14 corrected to 182, Q14-14 corrected to 182, Note regarding wall bar to 182 walls added
 Rev B - 02/10/13
 layout for construction, Staircase 1 rear wall and associated gridline P moved by 520mm to enable staircase walls to align as requested by PAV, External floor finish indicated to coordinate with M&E consultants requirements, Grids 17 & 24 structural Met Frame, Also wall between Apt 44 and Apt 45 corridor revised to structural Met Frame, All as requested by PAV, Dry rise added to Stair 2
 Rev C - 08/10/13
 The columns added, lift openings added, room numbers amended to have letter reference, mobility and ADT (adaptable) rooms amended as instructed, finish floor levels added, roomover coverings indicated, movement joints added
 Rev D - 11/11/13
 Narrow door near stairs revised to 700mm & external fire enclosure removed as instructed by contractor, position of hall landing window in stair 1 & 2 revised, dry rise added to gridline P corrected additional plaster face dims added to NLR partitions
 Rev E - 20/01/14
 Close corridor door to block A unobstructed 800mm corridor width revised to 1000mm, all as required by fire consultant, Window referencing added
 Rev F - 03/02/14
 Smoke vent added to Block A as required by B.Como, Apt 61 pod access door relocated, Apt 61 disabled bathroom repositioned, kitchen & studio layouts indicated, window WAA_Q47 & adjacent brick pier revised to IPA requirements, dimensions to gridline P corrected additional plaster face dims added to NLR partitions
 Rev G - 26/04/14
 Window WAA_Q48 to Apt 61 & adjacent brick pier revised to IPA requirements
 Rev H - 18/05/14
 Door averages revised to stair 1 & block A corridor to enable mechanical venting to block A smoke shaft

M Movement joint position
 Wall ties to movement joints to S.Engs details
 PAV to approve all movement joint locations



project no: 12/03
 project title: Impact 2
 location: Edward Street SHEFFIELD
 drawing no: 007
 drawing title: LEVEL 4 PLAN
 revision: H
 date: Sept 2013
 drawn by: [blank]
 approved by: [blank]
 scale: 1:100 @ A1
 drawing status: FOR CONSTRUCTION



Emergency Escape Route

- EXTERNAL OPENING SETTING OUT DIMENSIONS TO MASONRY REVEALS TO BRICKWORK
- INTERNAL OPENING SETTING OUT BETWEEN FACES OF MET FRAME PLASTERBOARD LININGS
- EXTERNAL OPENING DIMENSIONS TO ZINC CLADDING TO FACE OF ZINC REVEAL - SEE SETTING OUT DETAIL DRAWING FOR RELATION TO STRUCTURAL FRAME
- DIMENSION FROM EXTERNAL SETTING OUT DIMENSIONS TO GRID
- INTERNAL SETTING OUT DIMENSIONS FROM PLASTER FACE TO PLASTER FACE